

NORMAL HUMAN TISSUES FOR RESEARCH

Cureline provides high-quality human specimens for biomedical research. We have procured, analyzed and distributed thousands of biospecimens. Our tissue bank is located in California where high-quality fresh-frozen and OCT-embedded normal human tissues are immediately available for your research needs.

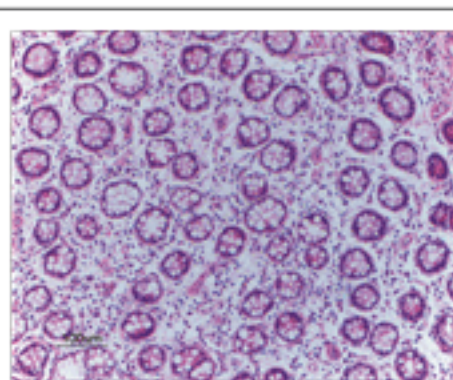
Non-target specific binding to adult normal human tissues (cross-reactivity) is investigated for all new therapeutic antibodies. Cureline offers services in procurement of normal tissues (surgical specimens and 3 - 12 h post-mortem tissues) and cross-reactivity testing using immunohistochemical analysis (IHC).

Our team collaborates with the major clinical and research centers in Europe, Asia, and the USA on developing collection protocols that are approved by local IRBs and comply with international and local laws. Standard patient consent forms and operating procedures are developed to guard patient's rights and to use all samples with maximum efficiency.

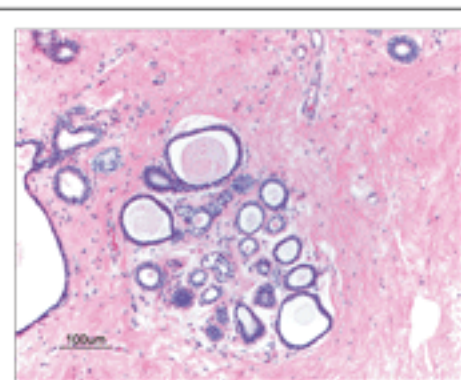
Standard Normal Tissue Formats:

- Snap-frozen tissues (1 x 1 x 0.5 cm)
- OCT-embedded tissues
- FFPE blocks

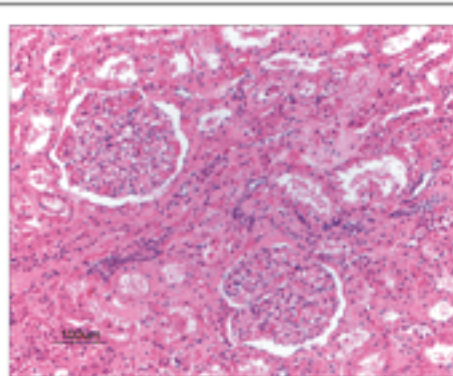
Tissue types not listed in the Panel may be available upon request.



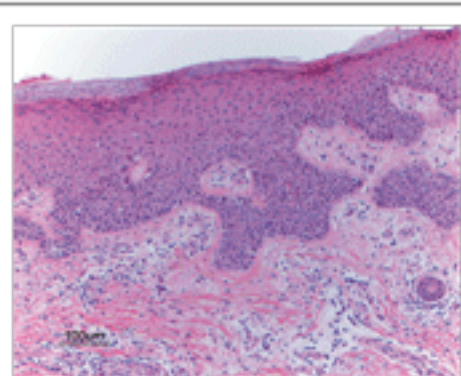
Colon



Breast



Kidney



Skin

Normal Human Tissue Panel

- | | |
|---|--|
| <ul style="list-style-type: none"> • Adrenal • Bladder • Blood cells (PBMC) • Bone Marrow (BM) • Breast • Cerebellum • Cerebral cortex • Colon (duodenum, colon, rectum) • Endothelium • Fallopian tube • GI tract (stomach, esophagus) • Heart (various regions) • Kidney (medulla and cortex) • Liver • Lung (including bronchioles) | <ul style="list-style-type: none"> • Lymph node (central) • Muscle (striated, others) • Ovary • Pancreas • Parathyroid gland • Pituitary gland • Placenta • Prostate • Skin • Spinal cord (cross-section) • Spleen • Testis • Thyroid • Ureter • Uterus (cervix, endometrium) |
|---|--|