

BLOOD AND BONE MARROW FROM PATIENTS WITH HEMATOLOGICAL CANCERS

Cureline provides high-quality human biosamples from patients with various types of leukemia, multiple myeloma, and other hematological malignancies in the chronic and crisis stages of the disease. Our standard collection protocols include:

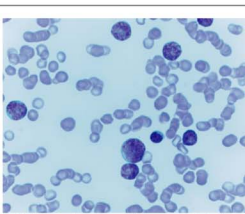
- Collection of fresh blood and preparation of viable PBMC or frozen PBMC pellets
- Collection of bone marrow aspirate and preparation of viable BMMC or frozen BMMC pellets
- Preparation of bone marrow FFPE (trephine biopsy block or paraffin-embedded BMMC pellets)

Cureline also provides research-related services utilizing these specimens:

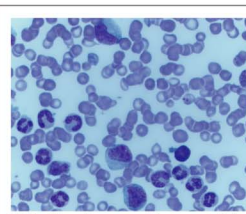
- Development of primary cell lines
- Target expression/activation profiling
- RNA isolation and expression analysis
- DNA isolation and SNP analysis
- Preparation of protein lysates

Our team collaborates with the major clinical centers in Europe and the USA on developing standard patient consent forms and operating procedures to ensure patient's rights and to use all samples with maximum efficiency.

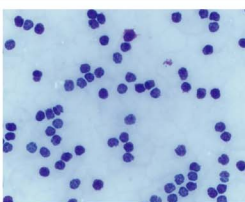
We work closely with principal investigators on conducting feasibility studies and developing custom protocols - please contact us with the details of your project for a custom collection set up.



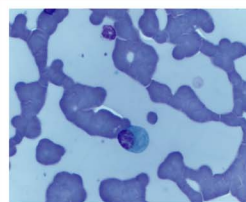
ALL (blood smear, Giemsa stain)



CML (blood smear, Giemsa stain)



CLL (blood smear, Giemsa stain)



Multiple Myeloma (plasma cell)

AVAILABLE SPECIMENS

Leukemia / Lymphoma

- PBMC, snap-frozen pellet
- Viable PBMC (DMSO-media)
- Marker-specific PBMC (CD19+, etc.)
- Bone marrow aspirate, snap-frozen
- BMMC pellet, frozen or FFPE
- Blood, frozen
- Blood, fresh (24 - 48 hours)
- Matching serum, plasma
- Blood, smears on slides

Multiple Myeloma / MDS

- Bone Marrow aspirate, snap-frozen
- BM trephine biopsy, snap-frozen
- Viable BMMC (DMSO-media)
- Marker-specific BMMC (CD138+, etc.)
- BM trephine biopsy, FFPE
- BMMC pellet, FFPE
- Matching serum, plasma, blood
- Bone marrow, smears on slides