

SINCE 2003 CURELINE, INC. HAS BEEN DEDICATED TO INNOVATION IN HUMAN TISSUE RESEARCH.

OUR GOAL IS TO IMPROVE THE OUTCOME FOR PATIENTS BY SUPPORTING THE ADVANCEMENT OF DRUG DISCOVERY, PRODUCT DEVELOPMENT AND COMMERCIALIZATION ACTIVITIES.



**Cureline, Inc.** is a global biosample management company providing effective solutions for scientifically challenging projects. Using our research and clinical expertise, we have developed multi-site international collaborations and have implemented protocols for obtaining, handling and processing of human specimens to ensure reproducible and reliable results.

---

**Cureline provides human biospecimens in many therapeutic areas, including:**

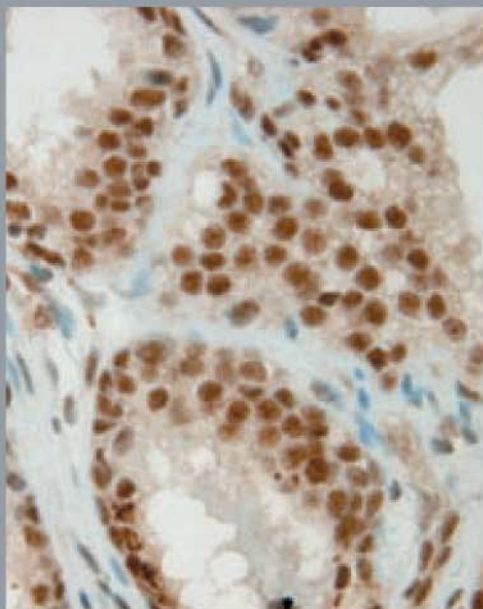
- Oncology
- Inflammatory Diseases
- Diabetes / Obesity
- Cardiovascular Diseases
- Neurology
- Panels of normal (control) tissues also available

---

**Cureline has developed a wide spectrum of analytical research services related to human biosample research, including:**

- Primary cell lines from solid tumors, hematological cancers and normal tissues
- RNA/DNA preparation
- Viable cell fractions from blood and/or bone marrow
- Custom TMA design and preparation
- A full range of histopathology services

[www.cureline.com](http://www.cureline.com)



CURELINE, INC. IS A  
PREFERRED PROVIDER FOR  
VWR INTERNATIONAL, A  
COMPANY DEDICATED TO  
DRUG DISCOVERY AND  
DEVELOPMENT SERVICES

### Recently developed custom acquisition protocols for collection of clinically-defined human specimens:

- Obtaining frozen and viable cellular sub-fractions from blood and bone marrow (hematological malignancies)
- Procurement of matching specimen sets from patients with solid tumors (tumor and adjacent normal tissues, serum/plasma, viable PBMCs, RNA, DNA, etc.)
- Development of primary cell lines from solid tumors and normal tissues
- Collection of frozen and FFPE tumor specimens with follow-up data (colorectal cancer, breast cancer, glioblastoma, etc.)
- Procurement of specimen sets (tissue biopsy, synovial fluid, PBMCs, serum, etc.) from patients with inflammatory diseases (rheumatoid arthritis, lupus, asthma, etc.)
- Post-mortem collection of disease-targeted tissues from donors with neurological diseases (Parkinson's disease, Alzheimer's disease, and others)
- Procurement of normal tissue sets for cross-reactivity testing

---

### Bioethical Policies

All human materials provided by Cureline are properly consented, delinked, and selected with accurate clinical diagnosis and therapy regimen by a certified clinical expert.

---

**For more information about Cureline capabilities, please visit:**  
**[www.cureline.com](http://www.cureline.com)**