

## QUALITY BIOSPECIMENS FROM PATIENTS WITH SOLID TUMORS

Cureline provides high-quality human specimens for biomedical research with an emphasis on solid tumor Oncology. In order to collect genetically-diverse human tumor specimens, we currently manage collaborations with clinical centers in Russia, Eastern Europe, India, the Philippines, and the USA.

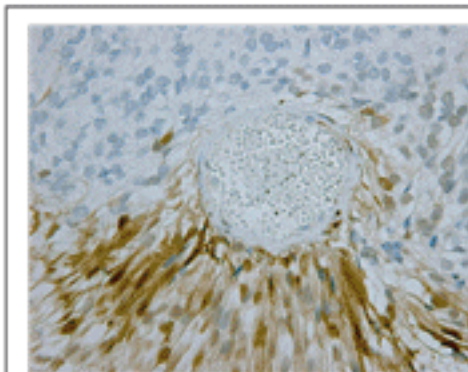
The following standard and custom specimen preparations are available:

- Snap – frozen tissue (time-controlled)
- Frozen tissue, OCT – embedded
- Formalin fixed, paraffin embedded
- Custom fixative (tissues and fluids)
- Cell fraction, frozen preparation
- Cell fraction, viable preparation
- Primary cell culture (tissue, fluids)
- Tissue sections (frozen and paraffin)
- RNA / DNA / protein
- Fresh tissues (skin, colon, blood)
- Custom preparation

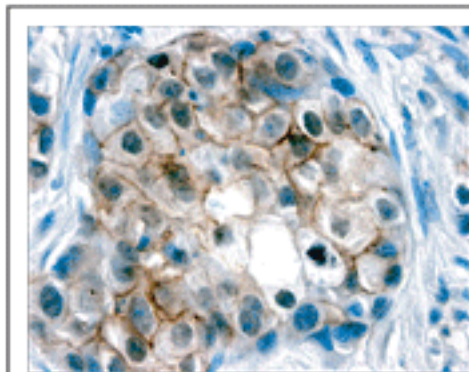
Blood specimens from patients with solid tumors and hematological malignancies are also available in a variety of preparations: whole-fresh, whole-frozen, PBMC (frozen cell pellet or viable cell preparation), serum, and plasma.

Cureline provides research-related services utilizing specimens from patients with solid tumors, including:

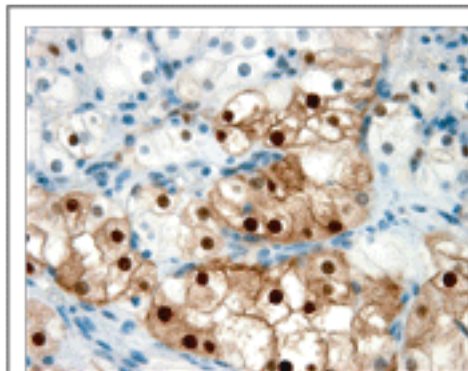
- Development of primary cell lines
- Target expression/activation profiling
- RNA isolation, expression analysis
- DNA isolation and SNP analysis
- Preparation of protein lysates



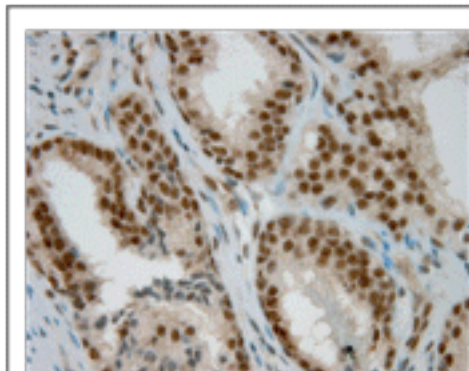
Ependyoma (IHC, P-ERK)



Breast carcinoma (IHC, P-RTK)



Renal cell carcinoma (IHC, P-ERK)



Prostate carcinoma (IHC, P-p38)

### Specimen Set

- QUADRUPLET Cancer Tissue Set:
  - Tumor tissue, fresh-frozen (FF)
  - Adjacent normal tissue, FF
  - Tumor tissue, FFPE
  - Adjacent normal tissue, FFPE
- Cancer serum (pre-surgery)
- Cancer plasma (pre-surgery)
- PBMC, FF pellet or viable cells
- Blood, frozen (normal DNA control)
- Blood, fresh (circulating cells)
- Blood, PAXgene™ tube (RNA)

### Indications

- Breast carcinoma
- Colorectal (carcinoma and polyps)
- Prostate (carcinoma & hyperplasia)
- Ovarian (carcinoma and benign)
- Lung (non-small cell carcinoma)
- Melanoma
- Renal cell carcinoma
- Pancreatic adenocarcinoma
- Head & Neck carcinoma
- Brain tumors (GBM, astrocytoma)
- Lymphoma (Hodgkin and NHL)

Other indications available upon request